

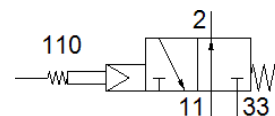
# Whisker valve

## FVSO-3-1/8

Part number: 3877

FESTO

Mechanically actuated valve, normally open, with particularly low actuating force, suitable for sensing of dissimilar workpieces or workpieces not precisely in position, or for different actuation levels. Actuation direction at right angle to whisker axis.



## Data sheet

| Feature                                 | Value   |
|---|---|
| Valve function                          | 3/2 open, monostable  |
| Type of actuation                       | mechanical  |
| Standard nominal flow rate              | 175 l/min   |
| Operating pressure MPa                  | 0.35 ... 0.8 MPa  |
| Working pressure                        | 3.5 ... 8 bar   |
| Design structure                        | Poppet seat   |
| Type of reset                           | mechanical spring   |
| Nominal size                            | 3.5 mm  |
| Exhaust-air function                    | throttleable  |
| Sealing principle                       | soft  |
| Assembly position                       | Any   |
| Type of piloting                        | Piloted   |
| Pilot air supply                        | Internal  |
| Flow direction                          | non reversible  |
| Pilot medium                            | Compressed air in accordance with ISO8573-1:2010 [-:-:-]                    |
| Note on forced dynamisation             | Switching frequency min. 1/year   |
| Operating medium                        | Compressed air in accordance with ISO8573-1:2010 [-:-:-]                    |
| Note on operating and pilot medium      | Lubricated operation possible (subsequently required for further operation) |
| Corrosion resistance classification CRC | 2 - Moderate corrosion stress   |
| PWIS conformity                         | VDMA24364-B1/B2-L   |
| Medium temperature                      | -10 ... 60 °C   |
| Ambient temperature                     | -10 ... 60 °C   |
| Product weight                          | 130 g   |
| Mounting type                           | with through hole   |
| Pneumatic connection, port 1            | G1/8  |
| Pneumatic connection, port 2            | G1/8  |
| Pneumatic connection, port 3            | G1/8  |
| Materials note                          | Conforms to RoHS  |
| Material seals                          | NBR   |
| Material housing                        | Aluminum<br>Anodized  |