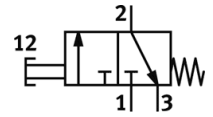
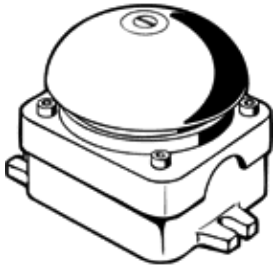


# Robust palm operated valve PV-3-1/8

Part number: 3648  
Product to be discontinued

FESTO

Type to be discontinued. Available until 2014. See Support Portal for alternative products.



## Data sheet

Feature	Value
Valve function	3/2 closed, monostable
Type of actuation	manual
Standard nominal flow rate	80 l/min
Working pressure	-0.95 ... 8 bar
Design structure	Poppet valve with spring return
Type of reset	mechanical spring
Nominal size	2 mm
Sealing principle	soft
Type of piloting	direct
Flow direction	reversible
Operating medium	Compressed air in accordance with ISO8573-1:2010 [7:-:-]
Note on operating and pilot medium	Lubricated operation possible (subsequently required for further operation)
Ambient temperature	-10 ... 60 °C
Product weight	520 g
Pneumatic connection, port 1	G1/8
Pneumatic connection, port 2	G1/8
Pneumatic connection, port 3	G1/8
Materials information, housing	Aluminum die cast