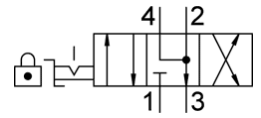
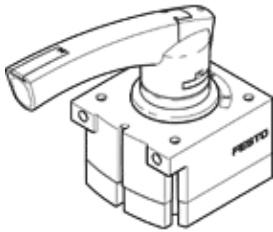


Hand lever valve VHER-P-H-B43E-B-G14

Part number: 3515640

★ Core product range

FESTO



Data sheet

| Feature | Value |
|---|---|
| Valve function | 4/3 exhausted |
| Type of actuation | manual |
| Width | 56 mm |
| Standard nominal flow rate | 1,500 l/min |
| Working pressure | 0 ... 10 bar |
| Note on working pressure | Vacuum operation at port 3 only In the case of dual-pressure operation, the pressure at port 1 must be higher than at port 3 |
| Design structure | Rotary slide valve |
| Nominal size | 8 mm |
| Exhaust-air function | throttleable |
| Instructions for use | Actuate only manually |
| Actuator lock | with accessories, lockable |
| Sealing principle | Hard |
| Type of piloting | direct |
| Flow direction | non reversible |
| Freedom from overlap | Yes |
| Switching position indicator | with accessories |
| Operating medium | Compressed air in accordance with ISO8573-1:2010 [7:4:4] |
| Note on operating and pilot medium | Lubricated operation possible (subsequently required for further operation) |
| Corrosion resistance classification CRC | 2 - Moderate corrosion stress |
| PWIS conformity | VDMA24364-B1/B2-L |
| Medium temperature | -20 ... 80 °C |
| Ambient temperature | -20 ... 80 °C |
| Actuation torque | 2 Nm |
| Product weight | 375 g |
| Mounting type | Front panel installation with through hole Optional |
| Pneumatic connection, port 1 | G1/4 |
| Pneumatic connection, port 2 | G1/4 |
| Pneumatic connection, port 3 | G1/4 |
| Pneumatic connection, port 4 | G1/4 |
| Materials note | Conforms to RoHS |
| Material seals | NBR |
| Material housing | PA |
| Material lever | PA |