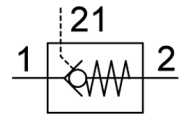
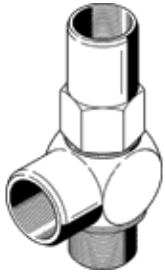


Piloted check valve HGL-1/4-NPT

Part number: 34878

FESTO

With sealing ring OL.



Data sheet

Feature	Value
Valve function	piloted non-return function
Pneumatic connection, port 1	1/4 NPT
Pneumatic connection, port 2	1/4 NPT
Mounting type	Threaded
Standard nominal flow rate	0 ... 490 l/min
Operating pressure MPa	0.03 ... 1 MPa
Working pressure	0.3 ... 10 bar
Pilot pressure MPa	0.18 ... 1 MPa
Pilot pressure	1.8 ... 10 bar 26.1 ... 145 psi
Ambient temperature	-20 ... 80 °C
Operating medium	Compressed air in accordance with ISO8573-1:2010 [7:4:4]
Note on operating and pilot medium	Lubricated operation possible (subsequently required for further operation)
PWIS conformity	VDMA24364-B1/B2-L
Medium temperature	-20 ... 80 °C
Materials note	Conforms to RoHS
Material seals	NBR