

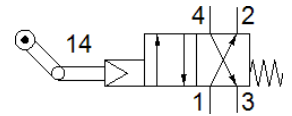
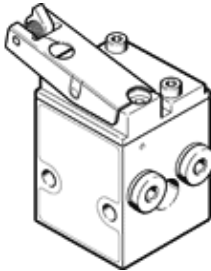
Toggle lever valve

LS-4-1/8

Part number: 3416

FESTO

With idle return, piloted, normally closed.



Data sheet

| Feature | Value |
|---|---|
| Valve function | 4/2 monostable |
| Type of actuation | mechanical |
| Standard nominal flow rate | 128 l/min |
| Operating pressure MPa | 0.35 ... 0.8 MPa |
| Working pressure | 3.5 ... 8 bar |
| Design structure | Poppet seat |
| Type of reset | mechanical spring |
| Nominal size | 3.5 mm |
| Exhaust-air function | throttleable |
| Sealing principle | soft |
| Assembly position | Any |
| Type of piloting | Piloted |
| Pilot air supply | Internal |
| Flow direction | non reversible |
| Pilot medium | Compressed air in accordance with ISO8573-1:2010 [-:-:-] |
| Note on forced dynamisation | Switching frequency min. 1/year |
| Operating medium | Compressed air in accordance with ISO8573-1:2010 [-:-:-] |
| Note on operating and pilot medium | Lubricated operation possible (subsequently required for further operation) |
| Corrosion resistance classification CRC | 2 - Moderate corrosion stress |
| PWIS conformity | VDMA24364-B1/B2-L |
| Medium temperature | -10 ... 60 °C |
| Ambient temperature | -10 ... 60 °C |
| Actuating force | 2.23 N |
| Product weight | 220 g |
| Mounting type | with through hole |
| Pneumatic connection, port 1 | G1/8 |
| Pneumatic connection, port 2 | G1/8 |
| Pneumatic connection, port 3 | G1/8 |
| Pneumatic connection, port 4 | G1/8 |
| Materials note | Conforms to RoHS |
| Material seals | NBR |
| Material housing | Aluminum Anodized |