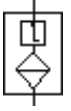
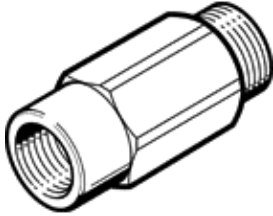


# Vacuum efficiency valve ISV-1/4

Part number: 33970

FESTO

For maintenance of vacuum if one or more suction cups within a group fail to make contact with the workpiece.



## Data sheet

| Feature  | Value  |
|--|--|
| Size   | G1/4   |
| Ejector pulse suitability                                | $\leq 8$ MPa<br>8 bar                                    |
| Assembly position  | Any  |
| Operating pressure MPa                                   | -95 ... 0 kPa  |
| Working pressure   | -0.95 ... 0 bar  |
| Required suction rate at -0.05 MPa (-0.5 bar, -7.25 psi) | 1.6 l/min  |
| Operating medium   | Compressed air in accordance with ISO8573-1:2010 [7:-:-] |
| Corrosion resistance classification CRC                  | 2 - Moderate corrosion stress                            |
| PWIS conformity  | VDMA24364-B2-L   |
| Ambient temperature                                      | -10 ... 60 °C  |
| Product weight   | 16 g   |
| Mounting type  | Threaded   |
| Pneumatic connection, port 1                             | G1/4   |
| Pneumatic connection, port 2                             | G1/4   |
| Material spring  | High alloy steel   |
| Material filter  | Wrought Aluminum alloy<br>Stainless steel mesh           |
| Material housing   | Wrought Aluminum alloy                                   |
| Material hollow bolt                                     | Wrought Aluminum alloy                                   |
| Material float   | POM  |