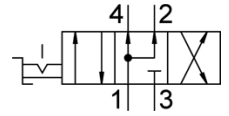


Hand lever valve VHER-H-B43U-G12

Part number: 3192071

FESTO



Data sheet

Feature	Value
Valve function	4/3-way, pressurised
Type of actuation	manual
Width	95 mm
Standard nominal flow rate	3,200 l/min
Working pressure	0 ... 10 bar
Note on working pressure	Vacuum operation at port 3 only In the case of dual-pressure operation, the pressure at port 1 must be higher than at port 3
Design structure	Rotary slide valve
Nominal size	12 mm
Exhaust-air function	throttleable
Instructions for use	Actuate only manually
Sealing principle	Hard
Type of piloting	direct
Flow direction	non reversible
Freedom from overlap	Yes
Switching position indicator	with accessories
Operating medium	Compressed air in accordance with ISO8573-1:2010 [7:4:4]
Note on operating and pilot medium	Lubricated operation possible (subsequently required for further operation)
Corrosion resistance classification CRC	2 - Moderate corrosion stress
PWIS conformity	VDMA24364-B1/B2-L
Medium temperature	-20 ... 80 °C
Ambient temperature	-20 ... 80 °C
Actuation torque	5 Nm
Product weight	1,010 g
Mounting type	Front panel installation with through hole Optional
Pneumatic connection, port 1	G1/2
Pneumatic connection, port 2	G1/2
Pneumatic connection, port 3	G1/2
Pneumatic connection, port 4	G1/2
Materials note	Conforms to RoHS
Material seals	NBR
Material housing	Aluminum die cast
Material lever	Aluminum die cast