

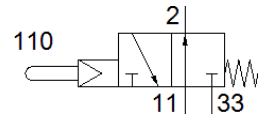
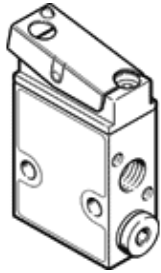
Stem actuated valve

VOS-3-1/8

Part number: 2952

FESTO

Piloted, normally open.



Data sheet

Feature	Value
Valve function	3/2 open, monostable
Type of actuation	mechanical
Standard nominal flow rate	141 ... 161 l/min
Operating pressure MPa	0.35 ... 0.8 MPa
Working pressure	3.5 ... 8 bar
Design structure	Poppet seat
Type of reset	mechanical spring
Nominal size	3.5 mm
Exhaust-air function	throttleable
Sealing principle	soft
Assembly position	Any
Type of piloting	Piloted
Pilot air supply	Internal
Flow direction	non reversible
Pilot medium	Compressed air in accordance with ISO8573-1:2010 [-::-]
Note on forced dynamisation	Switching frequency min. 1/year
Operating medium	Compressed air in accordance with ISO8573-1:2010 [-::-]
Note on operating and pilot medium	Lubricated operation possible (subsequently required for further operation)
Corrosion resistance classification CRC	2 - Moderate corrosion stress
PWIS conformity	VDMA24364-B1/B2-L
Medium temperature	-10 ... 60 °C
Ambient temperature	-10 ... 60 °C
Actuating force	2.93 N
Product weight	110 g
Mounting type	with through hole
Pneumatic connection, port 1	G1/8
Pneumatic connection, port 2	G1/8
Pneumatic connection, port 3	G1/8
Materials note	Conforms to RoHS
Material seals	NBR
Material housing	Aluminum Anodized