

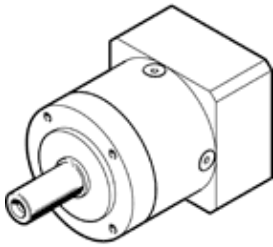
# Gearbox EMGA-60-P-G3-EAS-60

Part number: 2297686

★ Core product range

Suitable for servo motors.

FESTO



## Data sheet

Feature	Value
Gear unit flange size	60 mm
Motor flange size	60 mm
Torsional backlash	0.17 deg
Type of gear unit	Planetary gear unit
Gear unit ratio	3:1
Max. input speed	13,000 1/min
Temperature range of gear unit	-25 ... 90 °C
PWIS conformity	VDMA24364-B2-L
Protection class	IP54
Continuous output torque	28 Nm
Mass moment of inertia of gear unit	0.135 kgcm <sup>2</sup>
Max. output torque	45 Nm
Max. efficiency	98 %
Torsional resistance	2.3 Nm/arcmin
Product weight	900 g
Gear unit interface, output shaft	60H
Gear unit interface, drive shaft	60P
Materials note	Conforms to RoHS