

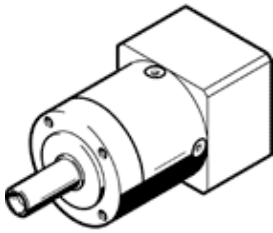
Gearbox EMGA-40-P-G3-EAS-40

Part number: 2297684

★ Core product range

Suitable for servo motors.

FESTO



Data sheet

Feature	Value
Gear unit flange size	40 mm
Motor flange size	40 mm
Torsional backlash	0.25 deg
Type of gear unit	Planetary gear unit
Gear unit ratio	3:1
Max. input speed	18,000 1/min
Temperature range of gear unit	-25 ... 90 °C
PWIS conformity	VDMA24364-B2-L
Protection class	IP54
Continuous output torque	11 Nm
Mass moment of inertia of gear unit	0.031 kgcm ²
Max. output torque	17.6 Nm
Max. efficiency	98 %
Torsional resistance	1 Nm/arcmin
Product weight	350 g
Gear unit interface, output shaft	40G
Gear unit interface, drive shaft	40P
Materials note	Conforms to RoHS