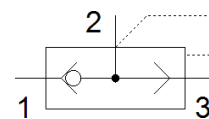
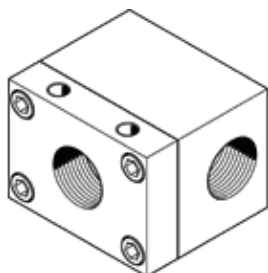


Rapid exhaust valve SE-3/4

Part number: 2280

FESTO



Data sheet

Feature	Value
Valve function	Quick exhaust
Pneumatic connection, port 1	G3/4
Pneumatic connection, port 2	G3/4
Mounting type	with through hole
Standard nominal flow rate, exhaust 0.6-0.5 MPa (6-5 bar, 87-72.5 psi)	7,500 l/min
Standard nominal flow rate pressurisation 0.6-0.5 MPa (6-5 bar, 87-72.5 psi)	2,500 l/min
Working pressure	0.5 ... 10 bar
Ambient temperature	-20 ... 75 °C
Material housing	Wrought Aluminum alloy Anodized
Operating medium	Compressed air in accordance with ISO8573-1:2010 [7:4:4]
Nominal size	19 mm
Assembly position	Any
Note on operating and pilot medium	Lubricated operation possible (subsequently required for further operation)
PWIS conformity	VDMA24364-B1/B2-L
Medium temperature	-20 ... 75 °C
Product weight	710 g
Pneumatic connection, port 3	G3/4
Materials note	Conforms to RoHS
Material seals	NBR