

# Solenoid valve

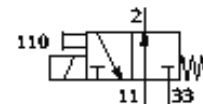
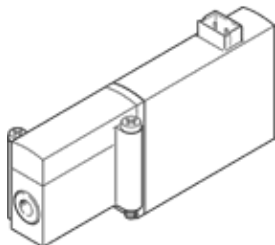
## MHA2-M1H-3/2O-2-TC

Part number: 197407

FESTO

manifold block valve for individual and battery mounting, fast switching, with plug connection at top.

Discontinued, available through 2007



## Data sheet

| Feature                                 | Value  |
|---|--|
| Valve function                          | 3/2 offen monostabil   |
| Type of actuation                       | electrical   |
| Width                                   | 10 mm  |
| Standard nominal flow rate              | 100 l/min  |
| Pneumatic working line                  | Subbase  |
| Operating voltage                       | 24V DC   |
| Operating pressure                      | -0.9 ... 8 bar   |
| Design structure                        | Pressure-relieved poppet valve   |
| Type of reset                           | mechanical spring  |
| Protection class                        | IP40   |
| Authorisation                           | c UL us - Recognized (OL)  |
| Nominal size                            | 2 mm   |
| Grid dimension                          | 14 mm  |
| Exhaust-air function                    | throttleable   |
| Sealing principle                       | soft   |
| Assembly position                       | Any  |
| Manual override                         | Pushing  |
| Type of piloting                        | direct   |
| Flow direction                          | reversible with restrictions   |
| Maximum switching frequency             | 130 Hz   |
| Switching time off                      | 7 ms   |
| Switching time on                       | 7 ms   |
| Duty cycle                              | 100%   |
| Characteristic coil data                | 24V DC: 2,88W  |
| Permissible voltage fluctuation         | +/- 10 %   |
| Operating medium                        | Filtered, unlubricated compressed air, 40 µm filtration<br>Filtered, lubricated compressed air, 40 µm filtration |
| Corrosion resistance classification CRC | 2  |
| Medium temperature                      | -5 ... 40 °C   |
| Ambient temperature                     | -5 ... 40 °C   |
| Product weight                          | 50 g   |
| Mounting type                           | On subbase   |
| Pneumatic connection, 11                | Subbase  |
| Pneumatic connection, port 2            | Subbase  |
| Pneumatic connection, 33                | Subbase  |
| Materials note                          | Free of copper and PTFE  |
| Materials information for seals         | HNBR<br>NBR  |
| Materials information, housing          | Zinc die-casting<br>coated   |
| Screw material data                     | Steel<br>Galvanized  |