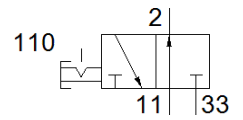
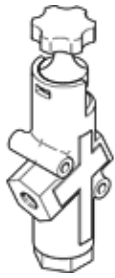


Shut-off valve HE-G1-LO

Part number: 197136

FESTO



Data sheet

Feature	Value
Design structure	Piston slide
Type of actuation	manual
Sealing principle	soft
Exhaust-air function	not throttleable
Manual override	None
Valve function	3/2 bistable
Working pressure	1 ... 10 bar
C value	38.47 l/sbar
b value	0.47
Standard nominal flow rate	10,000 l/min
Operating medium	Compressed air in accordance with ISO8573-1:2010 [7:4:4]
Corrosion resistance classification CRC	3 - High corrosion stress
PWIS conformity	VDMA24364-B1/B2-L
Medium temperature	-10 ... 60 °C
Ambient temperature	-10 ... 60 °C
Mounting type	Line installation with through hole
Assembly position	Any
Flow direction	non reversible
Product weight	1,000 g
Pneumatic connection, port 1	G1
Pneumatic connection, port 2	G1
Pneumatic connection, port 3	G1
Material seals	NBR TPE-U(PU)
Material housing	Aluminum die cast PBT