

Solenoid valve

NVF3-MOH-5/2-K-1/4

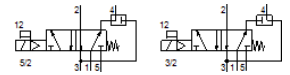
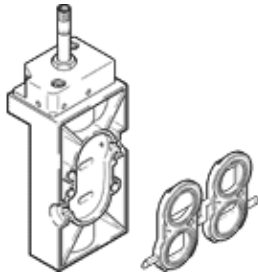
Part number: 196982

Classic - do not use for new projects

FESTO

With NAMUR port pattern per VDE/VDI 3845

Modern alternatives can be found by entering the first four characters of the type code in the search field.



Data sheet

Feature	Value
Valve function	5/2-way or 3/2-way, single solenoid
Type of actuation	electrical
Width	53 mm
Standard nominal flow rate	900 l/min
Operating pressure MPa	0.2 ... 1 MPa
Working pressure	2 ... 10 bar
Design structure	Poppet seat
Type of reset	mechanical spring
Protection class	IP65 to IEC 60529
Nominal size	7 mm
Exhaust-air function	throttleable
Sealing principle	soft
Assembly position	Any
Conforms to standard	VDI/VDE 3845 (NAMUR)
Manual override	detenting Pushing
Type of piloting	Piloted
Flow direction	non reversible
Lap	Underlap
b value	0.33
C value	4.2 l/sbar
Switching time off	38 ms
Switching time on	13 ms
Permissible frequency fluctuation	+/- 10 %
Permissible voltage fluctuation	+/- 10 %
Operating medium	Compressed air in accordance with ISO8573-1:2010 [7:4:4]
Note on operating and pilot medium	Lubricated operation possible (subsequently required for further operation)
Corrosion resistance classification CRC	3 - High corrosion stress
PWIS conformity	VDMA24364 zone III
Medium temperature	-10 ... 60 °C
Ambient temperature	-5 ... 50 °C
Product weight	280 g
Mounting type	On subbase
Scavenging orifice connection	Internal
Pilot exhaust port 84	M5
Pneumatic connection, port 1	G1/4
Pneumatic connection, port 2	NAMUR port pattern
Pneumatic connection, port 3	G1/4
Pneumatic connection, port 4	NAMUR port pattern
Pneumatic connection, port 5	G1/4
Material seals	NBR
Material housing	Aluminum die cast Anodized