

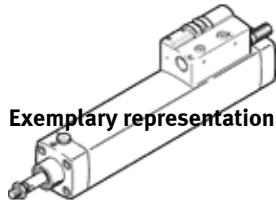
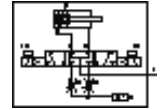
Cylinder-valve combination

DNCV-32- -PPV-A-5/3B

Part number: 196804

FESTO

Without diagnosis module
Run-out type. Available until 2010.



Exemplary representation

Data sheet

| Feature | Value |
|--|---|
| Stroke | 70 ... 500 mm |
| Piston diameter | 32 mm |
| Based on the standard | ISO 15552 (previously also VDMA 24652, ISO 6431, NF E49 003.1, UNI 10290) |
| Cushioning | PPV: Pneumatic cushioning adjustable at both ends |
| Assembly position | Any |
| Manual override | detenting Pushing |
| Position detection | For proximity sensor |
| Switching element function | Normally open contact |
| Working pressure | 3 ... 8 bar |
| Operating voltage range DC | 24 V |
| Mode of operation | double-acting |
| Max. output current, diagnosis | 300 mA |
| Max. output current, sensors | 20 mA |
| Max. switching output voltage DC | 26.9 V |
| Characteristic coil data | 24 V DC: low current phase: 0.5 W, high current phase: 1.23 W |
| Operating medium | Filtered compressed air, 5 µm filtration Filtered, unlubricated compressed air, 40 µm filtration |
| CE symbol (see declaration of conformity) | according to EU-EMV guideline |
| Corrosion resistance classification CRC | 2 |
| Protection class | IP65 to IEC 60529 |
| Ambient temperature | -5 ... 50 °C |
| Authorization | C-Tick |
| Cushioning length | 20 mm |
| Theoretical force at 6 bar, return stroke | 415 N |
| Theoretical force at 6 bar, advance stroke | 483 N |
| Moving mass with 0 mm stroke | 162 g |
| Additional weight per 10 mm stroke | 36 g |
| Basic weight for 0 mm stroke | 900 g |
| Additional mass factor per 10 mm of stroke | 9 g |
| Electrical connection | 8-pin M12x1 Plug Round design |
| Pneumatic connection, port 1 | QS-8 |
| Pneumatic connection, port 3 | Integrated silencer |
| Pneumatic connection, port 5 | Integrated silencer |