

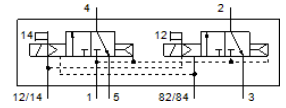
# Solenoid valve

## CDVI5.0-MT2H-2X3GLS

Part number: 196661

FESTO

For valve manifold CDVI, Clean Design.



## Data sheet

| Feature                                 | Value   |
|---|---|
| Valve function                          | 2x3/2 closed, monostable  |
| Type of actuation                       | electrical  |
| Standard nominal flow rate              | 300 l/min   |
| Working pressure                        | 3 ... 10 bar  |
| Design structure                        | Piston slide  |
| Type of reset                           | Air spring  |
| Nominal size                            | 5 mm  |
| Sealing principle                       | soft  |
| Manual override                         | Pushing   |
| Type of piloting                        | Piloted   |
| Pilot air supply                        | external  |
| Flow direction                          | non reversible  |
| Note on forced dynamisation             | Switching frequency min. 1/month  |
| Pilot pressure                          | 3 ... 8 bar   |
| b value                                 | 0.14  |
| C value                                 | 1.4 l/sbar  |
| Switching time off                      | 22 ms   |
| Switching time on                       | 10 ms   |
| Operating medium                        | Compressed air in accordance with ISO8573-1:2010 [7:4:4]                    |
| Note on operating and pilot medium      | Lubricated operation possible (subsequently required for further operation) |
| Corrosion resistance classification CRC | 3 - High corrosion stress   |
| PWIS conformity                         | VDMA24364-B2-L  |
| Medium temperature                      | -5 ... 50 °C  |
| Ambient temperature                     | -5 ... 50 °C  |
| Product weight                          | 210 g   |
| Mounting type                           | Threaded  |
| Pilot exhaust port 82/84                | Subbase   |
| Pneumatic connection, port 1            | Subbase   |
| Pneumatic connection, port 2            | Subbase   |
| Pneumatic connection, port 3            | Subbase   |
| Pneumatic connection, port 4            | Subbase   |
| Pneumatic connection, port 5            | Subbase   |
| Materials note                          | Conforms to RoHS  |
| Material seals                          | NBR<br>TPE-O  |
| Material housing                        | Aluminum die cast   |