

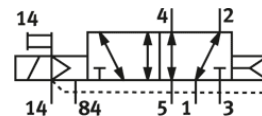
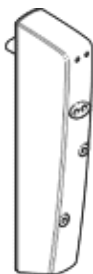
Solenoid valve

CDVI5.0-MT2H-5LS

Part number: 196657

FESTO

For valve manifold CDVI, Clean Design.



Data sheet

| Feature | Value |
|---|---|
| Valve function | 5/2 monostable |
| Type of actuation | electrical |
| Standard nominal flow rate | 650 l/min |
| Working pressure | -0.9 ... 10 bar |
| Design structure | Piston slide |
| Type of reset | Air spring |
| Nominal size | 5 mm |
| Exhaust-air function | throttleable |
| Sealing principle | soft |
| Manual override | Pushing |
| Type of piloting | Piloted |
| Pilot air supply | external |
| Flow direction | reversible |
| Note on forced dynamisation | Switching frequency min. 1/month |
| Pilot pressure | 3 ... 8 bar |
| b value | 0.38 |
| C value | 2.75 l/sbar |
| Switching time off | 22 ms |
| Switching time on | 12 ms |
| Operating medium | Compressed air in accordance with ISO8573-1:2010 [7:4:4] |
| Note on operating and pilot medium | Lubricated operation possible (subsequently required for further operation) |
| Corrosion resistance classification CRC | 3 - High corrosion stress |
| PWIS conformity | VDMA24364-B2-L |
| Medium temperature | -5 ... 50 °C |
| Ambient temperature | -5 ... 50 °C |
| Product weight | 195 g |
| Mounting type | Threaded |
| Pilot exhaust port 82/84 | Subbase |
| Pneumatic connection, port 1 | Subbase |
| Pneumatic connection, port 2 | Subbase |
| Pneumatic connection, port 3 | Subbase |
| Pneumatic connection, port 4 | Subbase |
| Pneumatic connection, port 5 | Subbase |
| Materials note | Conforms to RoHS |
| Material seals | NBR TPE-O |
| Material housing | Aluminum die cast |