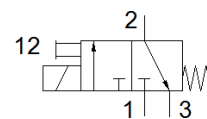
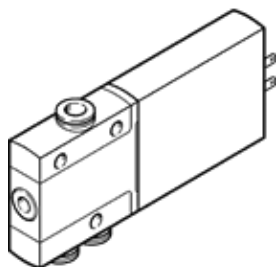


Solenoid valve

MHE2-M1H-3/2G-QS-4

Part number: 196134

FESTO



Data sheet

Feature	Value
Valve function	3/2 closed, monostable
Type of actuation	electrical
Width	10 mm
Standard nominal flow rate	100 l/min
Operating pressure MPa	-0.09 ... 0.8 MPa
Working pressure	-0.9 ... 8 bar
Design structure	Pressure-relieved poppet valve
Type of reset	mechanical spring
Protection class	IP65
Authorization	c UL us - Recognized (OL)
Nominal size	2 mm
Grid dimension	14 mm
Note on grid dimension	Minimum distance between the valves is 4 mm
Exhaust-air function	throttleable
Sealing principle	soft
Assembly position	Any
Manual override	Pushing
Type of piloting	direct
Flow direction	reversible with restrictions
Lap	Underlap
Operating pressure, reversible	-0.09 ... 0.1 MPa
Working pressure, reversible	-0.9 ... 1 bar
Operating pressure, reversible	-13.05 ... 14.5 psi
Maximum switching frequency	130 Hz
Switching time off	3.5 ms
Switching time on	7 ms
Duty cycle	100 %
Characteristic coil data	24 V DC: 2.88 W
Permissible voltage fluctuation	+/- 10 %
Operating medium	Compressed air in accordance with ISO8573-1:2010 [7:4:4]
Note on operating and pilot medium	Lubricated operation possible (subsequently required for further operation)
Vibration resistance	Transport application test at severity level 2 in accordance with FN 942017-4 and EN 60068-2-6
Shock resistance	Shock test with severity level 2 in accordance with FN 942017-5 and EN 60068-2-27
Corrosion resistance classification CRC	2 - Moderate corrosion stress
PWIS conformity	VDMA24364-B1/B2-L
Medium temperature	-5 ... 60 °C
Ambient temperature	-5 ... 60 °C
Product weight	60 g
Electrical connection	2-pin Plug
Mounting type	with through hole
Pneumatic connection, port 1	QS-4
Pneumatic connection, port 2	QS-4

Feature	Value
Pneumatic connection, port 3	QS-4
Materials note	Conforms to RoHS
Material seals	HNBR NBR
Material housing	Die-cast zinc, coated
Material screws	Galvanized steel