

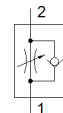
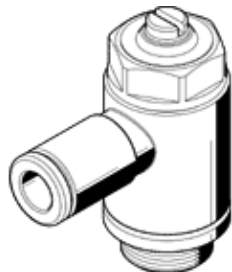
One-way flow control valve GRLA-F-1/8-QS-8-D

Part number: 195599
Product to be discontinued

FESTO

Outstanding corrosion protection

Type to be discontinued. Available until 2016. See Support Portal for alternative products.



Data sheet

Feature	Value
Valve function	One-way flow control function for exhaust air
Pneumatic connection, port 1	QS-8
Pneumatic connection, port 2	G1/8
Type of actuation	manual
Adjusting element	Slotted head screw
Mounting type	Threaded
Standard nominal flow rate in flow control direction	275 l/min
Standard nominal flow rate in non-return direction	132 ... 307 l/min
Ambient temperature	0 ... 150 °C
Assembly position	Any
Operating pressure complete temperature range	0.2 ... 10 bar
Standard flow rate in direction of flow control: 6 -> 0 bar	400 l/min
Standard flow rate in blocked direction: 6 -> 0 bar	330 ... 410 l/min
Operating medium	Compressed air in accordance with ISO8573-1:2010 [7:4:4]
Note on operating and pilot medium	Lubricated operation possible (subsequently required for further operation)
Storage temperature	-10 ... 150 °C
Medium temperature	0 ... 150 °C
Nominal tightening torque	3 Nm
Tolerance for nominal tightening torque	± 10 %
Product weight	23 g
Materials note	Free of copper and PTFE Conforms to RoHS
Materials information for seals	FPM
Material information, hollow bolt	Wrought Aluminum alloy
Release ring material data	Brass Chromium and nickel plated
Regulating screw material data	High alloy steel, non-corrosive
Swivel joint material data	Brass Chromium and nickel plated