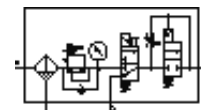
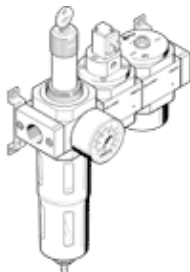


Service unit combination LFRS-1/2-D-DI-MAXI-KD-A

Part number: 195183

FESTO

With lockable regulator head and pressure gauge, for nominal pressure 12 bar, for unlubricated compressed air.



Data sheet

Feature	Value
Size	Maxi
Series	D
Actuator lock	Rotary knob with integrated lock
Assembly position	Vertical +/- 5°
Grade of filtration	40 µm
Condensate drain	fully automatic
Design structure	On/off valve Filter regulator with pressure gauge Safety start-up valve
Max. condensate volume	43 cm ³
Bowl guard	Metal bowl guard
Pressure gauge	with pressure gauge
Pressure control range	2.5 ... 12 bar
Inlet pressure 1	3 ... 12 bar
Standard nominal flow rate	3,000 l/min
Operating medium	Compressed air
Corrosion resistance classification CRC	2
Medium temperature	-10 ... 60 °C
Ambient temperature	-10 ... 60 °C
Product weight	3,540 g
Mounting type	Optional Line installation with accessories
Pneumatic connection, port 1	G1/2
Pneumatic connection, port 2	G1/2
Materials information, housing	Zinc die-casting
Materials information for bowl	PC