

# Service unit LFRS-1/2-D-MIDI-KE-A

Part number: 195073

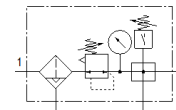
Classic - do not use for new projects

FESTO

With lockable regulator head and pressure gauge, for nominal pressure 12 bar, for unlubricated compressed air.

Modern alternatives can be found by entering the first four characters of the type code in the search field.

Type to be discontinued. Available until 2022. See Support Portal for alternative products.



## Data sheet

| Feature                                 | Value   |
|---|---|
| Size                                    | Midi  |
| Series                                  | D   |
| Actuator lock                           | Rotary knob with integrated lock  |
| Assembly position                       | Vertical +/- 5°   |
| Grade of filtration                     | 40 µm   |
| Condensate drain                        | fully automatic   |
| Design structure                        | Branching module<br>Pressure sensor<br>Filter regulator with pressure gauge |
| Max. condensate volume                  | 43 cm <sup>3</sup>  |
| Bowl guard                              | Metal bowl guard  |
| Pressure gauge                          | with pressure gauge   |
| Working pressure                        | 2 ... 12 bar  |
| Pressure regulation range               | 0.5 ... 12 bar  |
| Max. pressure hysteresis                | 0.2 bar   |
| Standard nominal flow rate              | 3,050 l/min   |
| Operating medium                        | Compressed air in accordance with ISO8573-1:2010 [-:-:-]<br>Inert gases     |
| Corrosion resistance classification CRC | 2 - Moderate corrosion stress   |
| Air purity class at output              | Compressed air in accordance with ISO8573-1:2010 [7:8:4]<br>Inert gases     |
| Medium temperature                      | -10 ... 60 °C   |
| Ambient temperature                     | -10 ... 60 °C   |
| Product weight                          | 2,240 g   |
| Mounting type                           | Line installation<br>with accessories<br>Optional                           |
| Pneumatic connection, port 1            | G1/2  |
| Pneumatic connection, port 2            | G1/2  |
| Material housing                        | Zinc die-casting  |
| Material bowl                           | PC  |