

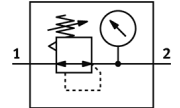
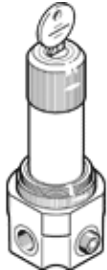
Pressure regulator

LRS-1/8-G-7

Part number: 194695
 Product to be discontinued

FESTO

Without pressure gauge, with lockable regulator head.
 Type to be discontinued. Available until 2014. See Support Portal for alternative products.



Data sheet

Feature	Value
Actuator lock	Rotary knob with integrated lock
Assembly position	Any
Controller function	Output pressure constant with initial pressure compensation with secondary exhaust
Pressure gauge	G1/8" prepared
Working pressure	1 ... 20 bar
Pressure control range	0.5 ... 7 bar
Max. pressure hysteresis	0.2 bar
Standard nominal flow rate	700 l/min
Operating medium	Compressed air in accordance with ISO8573-1:2010 [7:4:4]
Note on operating and pilot medium	Lubricated operation possible (subsequently required for further operation)
Medium temperature	-10 ... 80 °C
Ambient temperature	-10 ... 80 °C
Product weight	420 g
Mounting type	Front panel installation Line installation with accessories
Pneumatic connection, port 1	G1/8
Pneumatic connection, port 2	G1/8
Materials information for seals	NBR
Materials information, housing	Brass