

Differential pressure valve LRLLM-1/16-NPT-QS-5/32-U

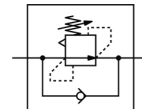
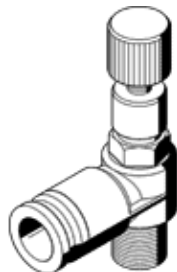
Part number: 192829

FESTO

Without manometer, with male thread and QS plug connector.

This product is only available if ordered from the Festo Corporation, USA.

Type to be discontinued. Available until 2011.



Data sheet

Feature	Value
Controller function	Differential pressure, constant
Pneumatic connection, port 1	NPT1/16-27
Mounting type	Threaded
Inlet pressure 1	0 ... 9 bar
Ambient temperature	0 ... 60 °C
Materials information, housing	PBT-reinforced
Operating medium	Filtered compressed air
Assembly position	Any
Product weight	17.5 g
Materials information for screw-in stud	Brass