

Service unit LFR-1/2-D-DI-MAXI-KF-A

Part number: 192459

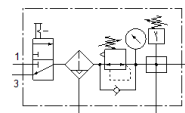
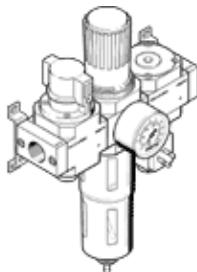
Classic - do not use for new projects

FESTO

consisting of manual on/off valve, filter regulator, distributor module and pressure switch, without socket, with mounting brackets.

With automatic condensate drain.

Modern alternatives can be found by entering the first four characters of the type code in the search field.



Data sheet

| Feature | Value |
|---|---|
| Size | Maxi |
| Series | D |
| Actuator lock | Rotary knob with lock |
| Assembly position | Vertical +/- 5° |
| Grade of filtration | 40 µm |
| Condensate drain | fully automatic |
| Design structure | Branching module Pressure sensor On/off valve Filter regulator with pressure gauge |
| Max. condensate volume | 43 cm ³ |
| Bowl guard | Metal bowl guard |
| Pressure gauge | with pressure gauge |
| Working pressure | 2 ... 12 bar |
| Pressure regulation range | 0.5 ... 12 bar |
| Operating medium | Compressed air in accordance with ISO8573-1:2010 [-:~:] Inert gases |
| Corrosion resistance classification CRC | 2 - Moderate corrosion stress |
| PWIS conformity | VDMA24364-B1/B2-L |
| Air purity class at output | Compressed air in accordance with ISO8573-1:2010 [6:8:4] Inert gases |
| Medium temperature | -10 ... 60 °C |
| Ambient temperature | -10 ... 60 °C |
| Product weight | 3,500 g |
| Mounting type | Line installation with accessories Optional |
| Pneumatic connection, port 1 | G1/2 |
| Pneumatic connection, port 2 | G1/2 |
| Material housing | Zinc die-casting |
| Material bowl | PC |