

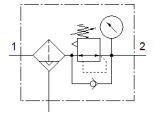
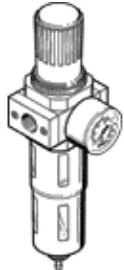
Filter regulator LFR-1-D-7-DI-MAXI-A

Part number: 192402
Classic - do not use for new projects

FESTO

Output pressure max. 7 bar, with metal bowl guard and pressure gauge.
With automatic condensate drain. With directly-controlled pressure regulator.

Modern alternatives can be found by entering the first four characters of the type code in the search field.



Data sheet

| Feature | Value |
|---|---|
| Size | Maxi |
| Series | D |
| Actuator lock | Rotary knob with lock |
| Assembly position | Vertical +/- 5° |
| Grade of filtration | 40 µm |
| Condensate drain | fully automatic |
| Design structure | Filter regulator with pressure gauge |
| Max. condensate volume | 43 cm ³ |
| Bowl guard | Metal bowl guard |
| Pressure gauge | with pressure gauge |
| Working pressure | 2 ... 12 bar |
| Pressure regulation range | 0.5 ... 7 bar |
| Max. pressure hysteresis | 0.4 bar |
| Standard nominal flow rate | 7,800 l/min |
| Operating medium | Compressed air to ISO 8573-1:2010 [7:9:-] Inert gases |
| Note on operating and pilot medium | Lubricated operation possible (subsequently required for further operation) |
| Corrosion resistance classification CRC | 2 - Moderate corrosion stress |
| PWIS conformity | VDMA24364-B1/B2-L |
| Storage temperature | -10 ... 60 °C |
| Air purity class at output | Compressed air in accordance with ISO8573-1:2010 [7:8:4] Inert gases |
| Medium temperature | 5 ... 60 °C |
| Ambient temperature | 5 ... 60 °C |
| Product weight | 1,670 g |
| Mounting type | Line installation |
| Pneumatic connection, port 1 | G1 |
| Pneumatic connection, port 2 | G1 |
| Materials note | Conforms to RoHS |
| Material housing | Zinc die-casting |
| Material bowl | PC |