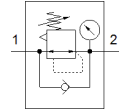
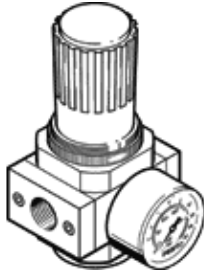


Pressure regulator LR-1/2-D-7-I-MIDI

Part number: 192315
Classic - do not use for new projects

FESTO

With increased return exhaust, working pressure up to 7 bar.
Modern alternatives can be found by entering the first four characters of the type code in the search field.



Data sheet

| Feature | Value |
|------------------------------------|--|
| Size | Midi |
| Series | D |
| Actuator lock | Rotary knob with lock |
| Assembly position | Any |
| Design structure | directly-controlled diaphragm regulator |
| Controller function | Output pressure constant with initial pressure compensation with secondary exhaust with return flow |
| Pressure gauge | with pressure gauge |
| Working pressure | 0 ... 16 bar |
| Pressure regulation range | 0.5 ... 7 bar |
| Max. pressure hysteresis | 0.2 bar |
| Standard nominal flow rate | 4,000 l/min |
| Operating medium | Compressed air in accordance with ISO8573-1:2010 [7:4:4] Inert gases |
| Note on operating and pilot medium | Lubricated operation possible (subsequently required for further operation) |
| PWIS conformity | VDMA24364-B1/B2-L |
| Air purity class at output | Compressed air in accordance with ISO8573-1:2010 [7:4:4] Inert gases |
| Medium temperature | -10 ... 60 °C |
| Ambient temperature | -10 ... 60 °C |
| Product weight | 720 g |
| Mounting type | Front panel installation Line installation with accessories |
| Pneumatic connection, port 1 | G1/2 |
| Pneumatic connection, port 2 | G1/2 |
| Materials note | Conforms to RoHS |
| Material of connecting plate | Zinc die-casting |
| Material seals | NBR |
| Material housing | Zinc die-casting |