

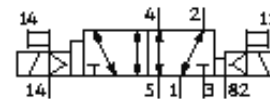
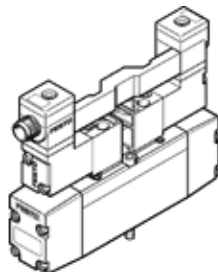
# Solenoid valve

## JMN2DH-5/2-D-02-S-ZSR

Part number: 191336

FESTO

with central plug, round  
Type to be discontinued. Available until 2009.



## Data sheet

Feature	Value
Valve function	5/2 bistable-dominant
Type of actuation	electrical
Width	18 mm
Standard nominal flow rate	500 l/min
Working pressure	-0.9 ... 10 bar
Design structure	Piston slide
Protection class	IP65
Nominal size	6 mm
Grid dimension	19 mm
Exhaust-air function	throttleable
Sealing principle	soft
Assembly position	Any
Conforms to standard	VDMA 24563
Manual override	with accessories, detenting
Type of piloting	Piloted
Pilot air supply	external
Flow direction	reversible
Pilot pressure	2 ... 10 bar
Switching time reversal	16 ms
Switching time reversal (dominating)	16 ms
Characteristic coil data	24V DC: 1,5W
Operating medium	filtered compressed air, grade of filtration 40 µm, lubricated or unlubricated Vacuum
Corrosion resistance classification CRC	2
Medium temperature	-10 ... 50 °C
Pilot medium	filtered compressed air, grade of filtration 40 µm, lubricated or unlubricated
Ambient temperature	-10 ... 50 °C
Product weight	210 g
Electrical connection	Central plug to DIN 43650 Cubic design Design C
Mounting type	with through hole
Auxiliary pilot air port 12/14	Subbase VDMA 24563 size 2
Pilot exhaust port 82/84	Subbase VDMA 24563 size 2
Pneumatic connection, port 1	Subbase VDMA 24563 size 2
Pneumatic connection, port 2	Subbase VDMA 24563 size 2
Pneumatic connection, port 3	Subbase VDMA 24563 size 2
Pneumatic connection, port 4	Subbase VDMA 24563 size 2
Pneumatic connection, port 5	Subbase VDMA 24563 size 2
Materials information for seals	NBR
Materials information, housing	Aluminum die cast