

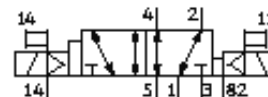
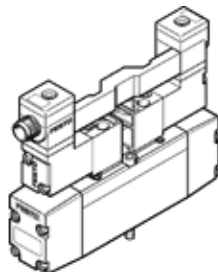
# Solenoid valve

## JMN2DH-5/2-D-01-S-ZSR

Part number: 191322

FESTO

with central plug, round  
Type to be discontinued. Available until 2009.



### Data sheet

Feature	Value
Valve function	5/2 bistable-dominant
Type of actuation	electrical
Width	26 mm
Standard nominal flow rate	1,000 l/min
Working pressure	-0.9 ... 16 bar
Design structure	Piston slide
Protection class	IP65
Nominal size	8 mm
Grid dimension	27 mm
Exhaust-air function	throttleable
Sealing principle	soft
Assembly position	Any
Conforms to standard	ISO 15407-1 VDMA 24563
Manual override	with accessories, detenting
Type of piloting	Piloted
Pilot air supply	external
Flow direction	reversible
Pilot pressure	2 ... 10 bar
Switching time reversal	18 ms
Switching time reversal (dominating)	16 ms
Characteristic coil data	24V DC: 1,5W
Operating medium	filtered compressed air, grade of filtration 40 µm, lubricated or unlubricated Vacuum
Corrosion resistance classification CRC	2
Medium temperature	-10 ... 50 °C
Pilot medium	filtered compressed air, grade of filtration 40 µm, lubricated or unlubricated
Ambient temperature	-10 ... 50 °C
Product weight	320 g
Electrical connection	Central plug to DIN 43650 Cubic design Design C
Mounting type	with through hole
Auxiliary pilot air port 12/14	Subbase VDMA 24563 size 1
Pilot exhaust port 82/84	Connection plate size 26 mm, according to ISO 15407-1 Subbase VDMA 24563 size 1
Pneumatic connection, port 1	Connection plate size 26 mm, according to ISO 15407-1 Subbase VDMA 24563 size 1
Pneumatic connection, port 2	Connection plate size 26 mm, according to ISO 15407-1 Subbase VDMA 24563 size 1

<b>Feature</b>	<b>Value</b>
Pneumatic connection, port 3	Connection plate size 26 mm, according to ISO 15407-1 Subbase VDMA 24563 size 1
Pneumatic connection, port 4	Connection plate size 26 mm, according to ISO 15407-1 Subbase VDMA 24563 size 1
Pneumatic connection, port 5	Connection plate size 26 mm, according to ISO 15407-1 Subbase VDMA 24563 size 1
Materials note	Free of copper and PTFE
Materials information for seals	NBR
Materials information, housing	Aluminum die cast