

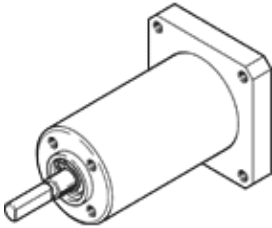
Freewheel unit FLSM-6-L

Part number: 188523

FESTO

for semi-rotary drive DSM.

These drives can be delivered on request with ATEX certification. The data on "ATEX identification", "ATEX ambient temperature" and "CE label" in the data sheet relate only to drives with certification.



Data sheet

Feature	Value
Size	6
Direction of rotation	anti-clockwise rotation
Assembly position	Any
PWIS conformity	VDMA24364-B1/B2-L
Ambient temperature	0 ... 60 °C
Theoretical torque at 0.6 MPa (6 bar, 87 psi)	0.15 Nm
Product weight	100 g
Material housing	Wrought Aluminum alloy
Material sleeve	Steel
Material shaft	Steel