

Service unit LFR-1/2-D-MIDI-KA

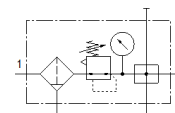
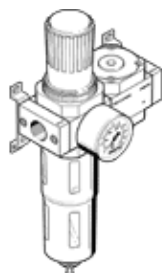
Part number: 185715
Classic - do not use for new projects

FESTO

consisting of filter regulator and distributor module, with mounting brackets.

With manual condensate drain.

Modern alternatives can be found by entering the first four characters of the type code in the search field.



Data sheet

Feature	Value
Size	Midi
Series	D
Actuator lock	Rotary knob with lock
Assembly position	Vertical +/- 5°
Grade of filtration	40 µm
Condensate drain	manual rotary
Design structure	Branching module Filter regulator with pressure gauge
Max. condensate volume	43 cm ³
Bowl guard	Metal bowl guard
Pressure gauge	with pressure gauge
Working pressure	1 ... 16 bar
Pressure regulation range	0.5 ... 12 bar
Max. pressure hysteresis	0.2 bar
Standard nominal flow rate	3,050 l/min
Operating medium	Compressed air in accordance with ISO8573-1:2010 [-:~:] Inert gases
Corrosion resistance classification CRC	2 - Moderate corrosion stress
PWIS conformity	VDMA24364-B1/B2-L
Air purity class at output	Compressed air in accordance with ISO8573-1:2010 [7:8:4] Inert gases
Medium temperature	-10 ... 60 °C
Ambient temperature	-10 ... 60 °C
Product weight	1,800 g
Mounting type	Line installation with accessories Optional
Pneumatic connection, port 1	G1/2
Pneumatic connection, port 2	G1/2
Material housing	Zinc die-casting
Material bowl	PC