

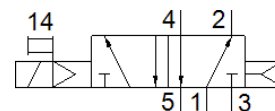
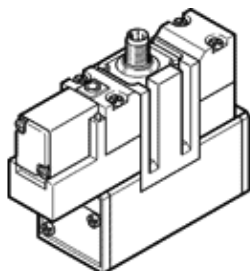
Solenoid valve

MEBH-5/2-D-2-ZSR-C

Part number: 184500
Product to be discontinued

FESTO

With central plug connector



Data sheet

Feature	Value
Valve function	5/2 monostable
Type of actuation	electrical
Width	54 mm
Standard nominal flow rate	2,300 l/min
Working pressure	2 ... 10 bar
Design structure	Piston slide
Type of reset	Air spring
Protection class	IP65
Nominal size	11.5 mm
Grid dimension	56 mm
Exhaust-air function	throttleable
Sealing principle	soft
Assembly position	Any
Conforms to standard	ISO 5599-1
Manual override	Pushing
ISO code	251
Type of piloting	Piloted
Pilot air supply	Internal
Flow direction	non reversible
Freedom from overlap	Yes
Note on forced dynamisation	Switching frequency at least once a week
Operating status display	LCD, yellow
Switching time off	85 ms
Switching time on	50 ms
Duty cycle	100%
Characteristic coil data	24 V DC: 2.5 W
Permissible voltage fluctuation	+/- 10 %
Operating medium	Compressed air in accordance with ISO8573-1:2010 [7:4:4]
Note on operating and pilot medium	Lubricated operation possible (subsequently required for further operation)
Vibration resistance	Transport application test at severity level 1 in accordance with FN 942017-4 and EN 60068-2-6
Shock resistance	Shock test with severity level 2 in accordance with FN 942017-5 and EN 60068-2-27
Medium temperature	-5 ... 50 °C
Sound pressure level	85 dB(A)
Pilot medium	Compressed air in accordance with ISO8573-1:2010 [7:4:4]
Ambient temperature	-5 ... 50 °C
Product weight	700 g
Electrical connection	Central plug Round design M12x1
Mounting type	On subbase With through-hole and screw

Feature	Value
Pilot exhaust port 82	Non-ducted
Pilot exhaust port 84	Non-ducted
Materials note	Conforms to RoHS
Materials information for seals	HNBR NBR
Materials information, housing	Aluminum die cast