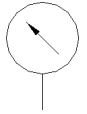
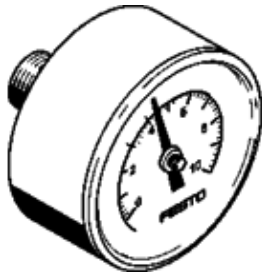


# Pressure gauge MA-23-10-R1/8

Part number: 183897

FESTO

With display unit in bar and psi.



## Data sheet

Feature	Value
Indicating range [bar]	0 ... 10 bar
Display range	0 ... 145 psi
Nominal size of pressure gauge	23
Design structure	Bourdon-tube pressure gauge
Mounting type	Line installation
Operating medium	Inert gases Neutral fluids
Operating pressure MPa	0 ... 1 MPa
Working pressure	0 ... 10 bar
Operating pressure	0 ... 145 psi
Alternating load factor	0.6
Measurement accuracy class	4
Protection class	IP44
Medium temperature	-20 ... 60 °C
Ambient temperature	-20 ... 60 °C
PWIS conformity	VDMA24364-B1/B2-L
Materials note	Conforms to RoHS
Position of connection	Rear side central
Pneumatic connection	R1/8
Materials in contact with media	Brass
Material of threaded plug	Brass
Material housing	Brass
Material screen	PC
Housing color	Black
Product weight	27 g
Note on operating and pilot medium	No acetylene No oxygen
Scale	Double scale Bar (external) psi (inner)