

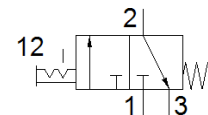
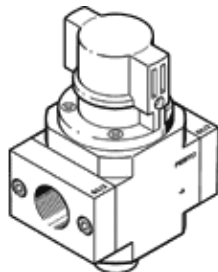
start valve

HE-1/2-D-MIDI-NPT

Part number: 173896
Classic - do not use for new projects

FESTO

For service units, with threaded connecting plate
Modern alternatives can be found by entering the first four characters of the type code in the search field.



Data sheet

| Feature | Value |
|---|---|
| Grid dimension | 55 mm |
| Design structure | Piston slide |
| Type of actuation | manual |
| Sealing principle | soft |
| Exhaust-air function | not throttleable |
| Manual override | None |
| Valve function | 3/2 bistable |
| Working pressure | 0 ... 16 bar |
| C value | 17 l/sbar |
| b value | 0.3 |
| Standard nominal flow rate | 3,600 l/min |
| Duty cycle | 100 % |
| Operating medium | Compressed air in accordance with ISO8573-1:2010 [7:4:4] Inert gases |
| Note on operating and pilot medium | Lubricated operation possible (subsequently required for further operation) |
| Corrosion resistance classification CRC | 2 - Moderate corrosion stress |
| Materials note | Conforms to RoHS |
| PWIS conformity | VDMA24364-B1/B2-L |
| Medium temperature | -10 ... 60 °C |
| Ambient temperature | -10 ... 60 °C |
| Mounting type | Line installation with accessories |
| Assembly position | Any |
| Flow direction | non reversible |
| Product weight | 511 g |
| Pneumatic connection, port 1 | 1/2 NPT |
| Pneumatic connection, port 2 | 1/2 NPT |
| Pneumatic connection, port 3 | G1/4 |
| Air purity class at output | Compressed air in accordance with ISO8573-1:2010 [7:4:4] Inert gases |
| Material seals | NBR |
| Material housing | Aluminum die cast |