

# Filter regulator LFR-3/8-D-MINI-NPT

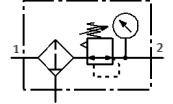
Part number: 173772

Classic - do not use for new projects

With metal bowl guard and pressure gauge. With manual condensate drain.

Modern alternatives can be found by entering the first four characters of the type code in the search field.

FESTO



## Data sheet

| Feature                                 | Value   |
|---|---|
| Size                                    | Mini  |
| Series                                  | D   |
| Grade of filtration                     | 40 µm   |
| Condensate drain                        | manual momentary-contact  |
| Max. condensate volume                  | 22 cm <sup>3</sup>  |
| Bowl guard                              | Metal bowl guard  |
| Working pressure                        | 1 ... 16 bar  |
| Max. pressure hysteresis                | 0.2 bar   |
| Standard nominal flow rate              | 1,600 l/min   |
| Operating medium                        | Compressed air to ISO 8573-1:2010 [-:9:-]<br>Inert gases                    |
| Note on operating and pilot medium      | Lubricated operation possible (subsequently required for further operation) |
| Corrosion resistance classification CRC | 2 - Moderate corrosion stress   |
| PWIS conformity                         | VDMA24364-B1/B2-L   |
| Storage temperature                     | -10 ... 60 °C   |
| Air purity class at output              | Compressed air in accordance with ISO8573-1:2010 [7:8:4]<br>Inert gases     |
| Medium temperature                      | -10 ... 60 °C   |
| Ambient temperature                     | -10 ... 60 °C   |
| Product weight                          | 460 g   |
| Mounting type                           | Line installation<br>With mounting bracket<br>Optional                      |
| Pneumatic connection, port 1            | 3/8 NPT   |
| Pneumatic connection, port 2            | 3/8 NPT   |
| Materials note                          | Conforms to RoHS  |
| Material housing                        | Zinc die-casting  |
| Material bowl                           | PC  |