

# Pneumatic valve

## VL-5/3E-1/8-B1

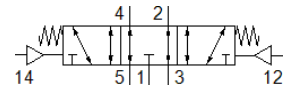
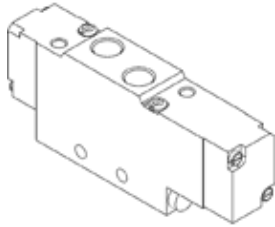
Part number: 173177  
Product to be discontinued

FESTO

5/3-way function, center position exhausted

This type is suitable for vacuum.

Type to be discontinued. Available until 2023. See Support Portal for alternative products.



## Data sheet

Feature	Value
Valve function	5/3 exhausted
Type of actuation	pneumatic
Width	17.8 mm
Standard nominal flow rate	350 l/min
Working pressure	-0.9 ... 10 bar
Design structure	Piston slide
Type of reset	mechanical spring
Authorization	UL - Recognized (OL)
Nominal size	5 mm
Grid dimension	18 mm
Exhaust-air function	throttleable
Sealing principle	soft
Assembly position	Any
Manual override	None
Type of piloting	direct
Pilot air supply	external
Flow direction	reversible
Lap	Positive overlap
Pilot pressure	3 ... 8 bar
b value	0.5
C value	1.54 l/sbar
Switching time off	22 ms
Switching time on	6 ms
Operating medium	Compressed air in accordance with ISO8573-1:2010 [7:4:4]
Note on operating and pilot medium	Lubricated operation possible (subsequently required for further operation)
Vibration resistance	Transport application test at severity level 1 in accordance with FN 942017-4 and EN 60068-2-6
Shock resistance	Shock test with severity level 2 in accordance with FN 942017-5 and EN 60068-2-27
Corrosion resistance classification CRC	2 - Moderate corrosion stress
Storage temperature	-20 ... 40 °C
Medium temperature	-5 ... 50 °C
Sound pressure level	75 dB(A)
Pilot medium	Compressed air in accordance with ISO8573-1:2010 [7:4:4]
Ambient temperature	-5 ... 50 °C
Product weight	95 g
Mounting type	with through hole
Pilot air port 12	M5
Pilot air port 14	M5
Pneumatic connection, port 1	G1/8

Feature	Value
Pneumatic connection, port 2	G1/8
Pneumatic connection, port 3	G1/8
Pneumatic connection, port 4	G1/8
Pneumatic connection, port 5	G1/8
Materials note	Conforms to RoHS
Material seals	HNBR NBR
Material housing	Aluminum die cast