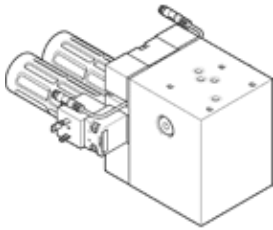


# Switch-off valve PAHL-SM-RE

Part number: 1709707

FESTO



## Data sheet

Feature	Value
Width	90 mm
Type of actuation	electrical
Sealing principle	soft
Assembly position	Any Preferably vertical (pilot valve on top)
Manual override	detenting Pushing
Design structure	Pilot-actuated piston poppet valve
Type of reset	mechanical spring
Switching element function	Normally open contact
Type of piloting	Piloted
Pilot air supply	external
Valve function	2x2/2-way, single solenoid, open
Safety function	Exhausting the control chamber
Performance level (PL)	Exhausting the control chamber/category 3, Performance Level d
CCF measures	Observe operating pressure limits Maintain operating voltage limits Observe compressed air quality Observe vibrations/shock Use of approved silencer Adhere to pulse pattern at timed safety outputs Observe pilot pressure limits Observe temperature range Adhere to permissible magnetic fields
Signal status display	LED
Switching position sensing	Normal position with sensor
Switching status display sensor	LED
Working pressure	0 ... 50 bar
Pilot pressure	6 ... 10 bar
Duty cycle	100%
Nominal operating voltage DC	24 V
Operating medium	Compressed air in accordance with ISO8573-1:2010 [7:4:4] Inert gases
CE symbol (see declaration of conformity)	according to EU machines guideline
Vibration resistance	Transport application test at severity level 2 in accordance with FN 942017-4 and EN 60068-2-6
Shock resistance	Shock test with severity level 2 in accordance with FN 942017-5 and EN 60068-2-27
Corrosion resistance classification CRC	2 - Moderate corrosion stress
Medium temperature	5 ... 50 °C
Pilot medium	Compressed air in accordance with ISO8573-1:2010 [7:4:4] Inert gases
Ambient temperature	5 ... 50 °C
Product weight	3,500 g
Operating voltage range, DC sensor	10 ... 30 V
Electrical connection	to EN 175301-803

Feature	Value
	Plug pattern type A to EN 175301-803
Sensor connection	3-pin M8x1 Cable with plug
Pneumatic port 10	G1/4
Pneumatic port 2a	G3/4
Pneumatic port 2b	G3/4
Materials note	Contains PWIS substances Conforms to RoHS
Material housing	Aluminum Anodized