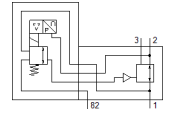
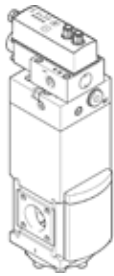


# Electrical pressure regulator PREL-90-HP3-V1-V-20CFX-S1-4

Part number: 1709135

FESTO



## Data sheet

| Feature                                 | Value                                                                                    |
|-----------------------------------------|------------------------------------------------------------------------------------------|
| Size                                    | 90                                                                                       |
| Nominal diameter DN                     | 24                                                                                       |
| Series                                  | L                                                                                        |
| Assembly position                       | Vertical                                                                                 |
| Type of actuation                       | electrical                                                                               |
| Design structure                        | Electrically adjustable pressure regulator                                               |
| Controller function                     | Output pressure constant<br>with initial pressure compensation<br>with secondary exhaust |
| Operating pressure MPa                  | 0 ... 5 MPa                                                                              |
| Working pressure                        | 0 ... 50 bar                                                                             |
| Pressure regulation range               | 0.5 ... 20 bar                                                                           |
| Nominal operating voltage DC            | 24 V                                                                                     |
| Signal range, analog output             | 0 - 10 V                                                                                 |
| Signal range, analog input              | 0 - 10 V                                                                                 |
| SETPOINT/ACTUAL values                  | Voltage type 0 - 10 V                                                                    |
| Authorization                           | SE Type Test Certification                                                               |
| Operating medium                        | Compressed air in accordance with ISO8573-1:2010 [7:4:4]<br>Inert gases                  |
| Corrosion resistance classification CRC | 2 - Moderate corrosion stress                                                            |
| PWIS conformity                         | VDMA24364 zone III                                                                       |
| Storage temperature                     | -10 ... 60 °C                                                                            |
| Food-safe                               | See Supplementary material information                                                   |
| Medium temperature                      | 5 ... 50 °C                                                                              |
| Ambient temperature                     | 5 ... 50 °C                                                                              |
| Product weight                          | 6,100 g                                                                                  |
| Electrical connection IN                | Plug, M12, 5-pin, A-coded                                                                |
| Electrical connection OUT               | Plug, M12, 5-pin, A-coded                                                                |
| Mounting type                           | on service unit<br>with accessories<br>Optional                                          |
| Pneumatic connection, port 1            | G1                                                                                       |
| Pneumatic connection, 11                | G1/4                                                                                     |
| Pneumatic connection, port 2            | G1                                                                                       |
| Pneumatic port 22                       | G1/4                                                                                     |
| Pneumatic connection, port 3            | G1                                                                                       |
| Pneumatic port 82                       | G3/8                                                                                     |
| Materials note                          | Conforms to RoHS                                                                         |
| Material underneath cover               | Anodised aluminium                                                                       |
| Material spring                         | Spring steel                                                                             |
| Material housing                        | Anodised aluminium                                                                       |