

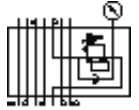
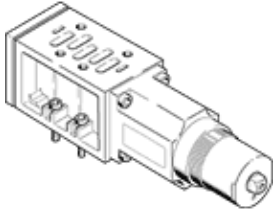
Intermediate pressure regulator plate LR-ZP-B-D-1-CT

Part number: 165856

FESTO

For ISO valves.

Run-out type. Available until 2010.



Data sheet

Feature	Value
Based on the standard	ISO 5599-1
Integrated function	Pressure regulator
Design structure	Piston
Pressure control range	0 ... 12 bar
Inlet pressure 1	≤ 14 bar
Product weight	520 g
Materials note	Free of copper and PTFE
Materials information for seals	NBR
Materials information, housing	Aluminum die cast Steel