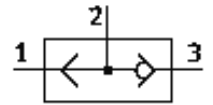
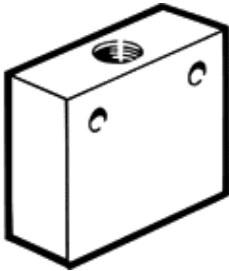


OR gate OS-1/4-B-CT

Part number: 165693

FESTO

Run-out type. Available until 2010.



Data sheet

Feature	Value
Valve function	OR function
Pneumatic connection, port 1	G1/4
Pneumatic connection, port 2	G1/4
Mounting type	with through hole
Standard nominal flow rate	1,170 l/min
Working pressure	1 ... 10 bar
Ambient temperature	-10 ... 60 °C
Materials information, housing	Aluminum
Operating medium	Compressed air, filtered, unlubricated Filtered, lubricated air
Nominal size	6.5 mm
Medium temperature	-10 ... 60 °C
Pneumatic connection, port 3	G1/4
Materials note	Free of copper and PTFE
Materials information for seals	NBR