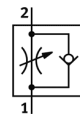


One-way flow control valve GRLA-1/2-B-CT

Part number: 165647

FESTO

For exhaust air flow control, with swivel joint.
Type to be discontinued. Available until 2011.



Data sheet

Feature	Value
Valve function	One-way flow control function for exhaust air
Pneumatic connection, port 1	G1/2
Pneumatic connection, port 2	G1/2
Adjusting element	Slotted head screw
Mounting type	Threaded
Standard nominal flow rate in flow control direction	2,100 l/min
Standard nominal flow rate in non-return direction	1,550 ... 2,200 l/min
Working pressure	0.3 ... 10 bar
Ambient temperature	-10 ... 60 °C
Operating medium	Filtered, unlubricated compressed air, 40 µm filtration Filtered, lubricated compressed air, 40 µm filtration
Authorization	Germanischer Lloyd
Assembly position	Any
Standard flow rate in direction of flow control: 6 -> 0 bar	4,000 l/min
Standard flow rate in blocked direction: 6 -> 0 bar	2,950 ... 4,190 l/min
Medium temperature	-10 ... 60 °C
Max. tightening torque	40 Nm
Product weight	204 g
Materials information for screw-in stud	Wrought Aluminum alloy
Materials note	Free of copper and PTFE
Materials information for seals	NBR
Release ring material data	POM
Regulating screw material data	Wrought Aluminum alloy
Swivel joint material data	Zinc die-casting