

Proportional pressure regulator

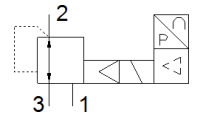
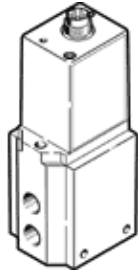
MPPE-3-1/4-2,5-420-B

Part number: 164318

Classic - do not use for new projects

Modern alternatives can be found by entering the first four characters of the type code in the search field.

FESTO



Data sheet

Feature	Value
Nominal diameter, pressurization	7 mm
Nominal diameter, exhaust	7 mm
Type of actuation	electrical
Sealing principle	soft
Assembly position	Any
Design structure	Piloted piston regulator
Short circuit strength	for all electrical connections
Safety instructions	MPPE-B safety position: If the power supply cable is interrupted, output pressure is maintained unregulated
Polarity protected	for all electrical connections
Valve function	3-way closed proportional-pressure regulator
Operating pressure MPa	≤ 0.45 MPa
Working pressure	≤ 4.5 bar
Pressure regulation range MPa	0 ... 0.25 MPa
Pressure regulation range	0 ... 2.5 bar
Inlet pressure 1	3.5 ... 4.5 bar
Supply pressure 1 MPa	0.35 ... 0.45 MPa
Max. pressure hysteresis (MPa)	0.004 MPa
Max. pressure hysteresis	0.04 bar
Switching time off	260 ms
Switching time on	150 ms
Operating voltage range DC	18 ... 30 V
Reference voltage	10 V
Residual ripple	10 %
SETPOINT/ACTUAL values	Current type 4 - 20 mA
Operating medium	Compressed air in accordance with ISO8573-1:2010 [7:4:4] Inert gases
Note on operating and pilot medium	Lubricated operation possible (subsequently required for further operation)
Authorization	RCM Mark
KC mark	KC-EMV
CE symbol (see declaration of conformity)	according to EU-EMV guideline in accordance with EU RoHS directive
UKCA marking (see declaration of conformity)	To UK instructions for EMC To UK RoHS instructions
Corrosion resistance classification CRC	2 - Moderate corrosion stress
PWIS conformity	VDMA24364-B2-L
Medium temperature	0 ... 60 °C
Protection class	IP65
Ambient temperature	0 ... 50 °C
Product weight	920 g
Electrical connection	8-pin M16x0,75

Feature	Value
	Plug to DIN 45326 Round design
Mounting type	with through hole
Pneumatic connection, port 1	G1/4
Pneumatic connection, port 2	G1/4
Pneumatic connection, port 3	G1/4
Materials note	Conforms to RoHS
Material housing	Wrought Aluminum alloy
Material membrane	NBR