

# Solenoid valve

## CPE18-M2H-5JS-QS-8

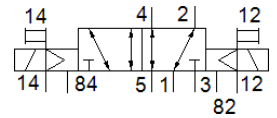
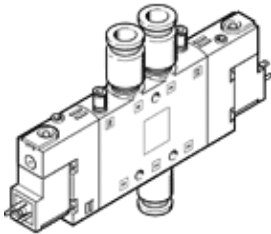
Part number: 163775  
Classic - do not use for new projects

FESTO

High component density

This type is suitable for vacuum.

Modern alternatives can be found by entering the first four characters of the type code in the search field.



## Data sheet

| Feature                                      | Value  |
|--|--|
| Valve function                               | 5/2 bistable   |
| Type of actuation                            | electrical   |
| Width  | 18 mm  |
| Standard nominal flow rate                   | 850 l/min  |
| Operating pressure MPa                       | -0.09 ... 1 MPa  |
| Working pressure                             | -0.9 ... 10 bar  |
| Design structure                             | Piston slide   |
| Authorization                                | c UL us - Recognized (OL)  |
| Maritime classification                      | see certificate  |
| CE symbol (see declaration of conformity)    | according to EU low voltage guideline  |
| UKCA marking (see declaration of conformity) | To UK instructions for electrical equipment  |
| Protection class                             | IP65<br>with plug socket<br>to IEC 60529   |
| Nominal size                                 | 8 mm   |
| Exhaust-air function                         | throttleable   |
| Sealing principle                            | soft   |
| Assembly position                            | Any  |
| Manual override                              | with accessories, detenting<br>Pushing   |
| Type of piloting                             | Piloted  |
| Pilot air supply                             | external   |
| Flow direction                               | reversible   |
| Valve position identification                | Label holder   |
| Lap  | Positive overlap   |
| Pilot pressure MPa                           | 0.2 ... 1 MPa  |
| Pilot pressure                               | 2 ... 10 bar   |
| Switching time reversal                      | 13 ms  |
| Duty cycle                                   | 100 %  |
| Max. positive test pulse with logic 0        | 3,300 µs   |
| Max. negative test pulse with logic 1        | 3,100 µs   |
| Characteristic coil data                     | 110 V AC: 50/60 Hz, pick-up power 3 VA, holding power 2.4 VA                                   |
| Permissible voltage fluctuation              | -15 % / +10 %  |
| Operating medium                             | Compressed air in accordance with ISO8573-1:2010 [7:4:4]                                       |
| Note on operating and pilot medium           | Lubricated operation possible (subsequently required for further operation)                    |
| Vibration resistance                         | Transport application test at severity level 2 in accordance with FN 942017-4 and EN 60068-2-6 |
| Shock resistance                             | Shock test with severity level 2 in accordance with FN 942017-5 and EN 60068-2-27              |
| Corrosion resistance classification CRC      | 2 - Moderate corrosion stress  |

| Feature                      | Value  |
|------------------------------|--|
| PWIS conformity              | VDMA24364-B1/B2-L  |
| Medium temperature           | -5 ... 50 °C   |
| Pilot medium                 | Compressed air in accordance with ISO8573-1:2010 [7:4:4] |
| Ambient temperature          | -5 ... 50 °C   |
| Electrical connection        | Plug pattern type C to EN 175301-803                     |
| Mounting type                | with through hole  |
| Pilot exhaust port 82        | M5   |
| Pilot exhaust port 84        | M5   |
| Pilot air port 12            | M5   |
| Pilot air port 14            | M5   |
| Pneumatic connection, port 1 | QS-8   |
| Pneumatic connection, port 2 | QS-8   |
| Pneumatic connection, port 3 | G1/4   |
| Pneumatic connection, port 4 | QS-8   |
| Pneumatic connection, port 5 | G1/4   |
| Materials note               | Conforms to RoHS   |
| Material seals               | NBR  |
| Material housing             | Aluminum die cast  |