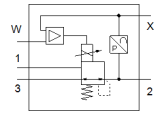
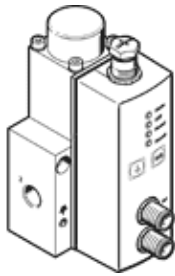


Proportional pressure regulator VPPL-3L-3-G14-0L40H-V1-V-S1-7

Part number: 1635980

FESTO



Data sheet

Feature	Value
Nominal diameter, pressurization	3 mm
Nominal diameter, exhaust	3 mm
Type of actuation	electrical
Sealing principle	soft
Assembly position	Any Preferably upright
Design structure	directly-controlled piston regulator
Short circuit strength	No
Max. line length	30 m
Safety instructions	Safety setting VPPL
Polarity protected	for all electrical connections
Type of reset	mechanical spring
Type of piloting	direct
Valve function	3-way closed proportional-pressure regulator
Type of display	LED display
Operating pressure MPa	≤ 5 MPa
Working pressure	≤ 50 bar
Pressure regulation range MPa	0.04 ... 4 MPa
Pressure regulation range	0.4 ... 40 bar
Inlet pressure 1	0 ... 50 bar
Supply pressure 1 MPa	0 ... 5 MPa
Max. pressure hysteresis (MPa)	0.04 MPa
Max. pressure hysteresis	0.4 bar 5.8 psi
b value	0.25
C value	0.8 l/sbar
Standard nominal flow rate	245 l/min
Standard nominal flow rate 2-3	282 l/min
Switching time off	654 ms
Switching time on	428 ms
Operating voltage range DC	21.6 ... 27.6 V
Duty cycle	100 %
Max. electrical power consumption	26.7 W
Residual ripple	10 %
Signal range, analog output	0 - 10 V
Signal range, analog input	0 - 10 V
SETPOINT/ACTUAL values	Voltage type 0 - 10 V
Operating medium	Compressed air in accordance with ISO8573-1:2010 [7:4:4] Inert gases
Note on operating and pilot medium	Lubricated operation not possible
Authorization	c UL us - Listed (OL)
KC mark	KC-EMV
CE symbol (see declaration of conformity)	according to EU-EMV guideline
UKCA marking (see declaration of conformity)	To UK instructions for EMC
Corrosion resistance classification CRC	2 - Moderate corrosion stress
PWIS conformity	VDMA24364 zone III

Feature	Value
Medium temperature	5 ... 50 °C
Protection class	IP65
Ambient temperature	5 ... 50 °C
Storage temperature	-10 ... 60 °C
Product weight	1,100 g
Linearity error in ± %FS	1 %FS
Overall accuracy	1,25 %FS
Temperature coefficient	0.04 %/K
Repetition accuracy in ± %FS	1 %FS
Diagnosis interface electrical connection	Socket, M12, 5-pin, A-coded
Electrical connection IN	Plug, M12, 5-pin, A-coded
Electrical connection OUT	Plug, M12, 5-pin, A-coded
Mounting type	with through hole
Pneumatic connection, port 1	G1/4
Pneumatic connection, port 2	G1/4
Pneumatic connection, port 3	G1/4
Materials note	Conforms to RoHS
Material housing	Anodised wrought aluminium alloy