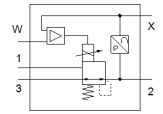
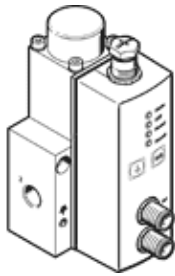


# Proportional pressure regulator VPPL-3L-3-G14-0L40H-V1-A-S1-7

Part number: 1635977

FESTO



## Data sheet

| Feature                                      | Value   |
|--|---|
| Nominal diameter, pressurization             | 3 mm  |
| Nominal diameter, exhaust                    | 3 mm  |
| Type of actuation                            | electrical  |
| Sealing principle                            | soft  |
| Assembly position                            | Any<br>Preferably upright   |
| Design structure                             | directly-controlled piston regulator                                    |
| Short circuit strength                       | No  |
| Max. line length                             | 30 m  |
| Safety instructions                          | Safety setting VPPL   |
| Polarity protected                           | for all electrical connections  |
| Type of reset                                | mechanical spring   |
| Type of piloting                             | direct  |
| Valve function                               | 3-way closed proportional-pressure regulator                            |
| Type of display                              | LED display   |
| Operating pressure MPa                       | $\leq 5$ MPa  |
| Working pressure                             | $\leq 50$ bar   |
| Pressure regulation range MPa                | 0.04 ... 4 MPa  |
| Pressure regulation range                    | 0.4 ... 40 bar  |
| Inlet pressure 1                             | 0 ... 50 bar  |
| Supply pressure 1 MPa                        | 0 ... 5 MPa   |
| Max. pressure hysteresis (MPa)               | 0.04 MPa  |
| Max. pressure hysteresis                     | 0.4 bar<br>5.8 psi  |
| b value                                      | 0.25  |
| C value                                      | 0.8 l/sbar  |
| Standard nominal flow rate                   | 245 l/min   |
| Standard nominal flow rate 2-3               | 282 l/min   |
| Switching time off                           | 654 ms  |
| Switching time on                            | 428 ms  |
| Operating voltage range DC                   | 21.6 ... 27.6 V   |
| Duty cycle                                   | 100 %   |
| Max. electrical power consumption            | 26.7 W  |
| Residual ripple                              | 10 %  |
| Signal range, analog output                  | 4 - 20 mA   |
| Signal range, analog input                   | 0 - 10 V  |
| SETPOINT/ACTUAL values                       | Voltage type 0 - 10 V   |
| Operating medium                             | Compressed air in accordance with ISO8573-1:2010 [7:4:4]<br>Inert gases |
| Note on operating and pilot medium           | Lubricated operation not possible                                       |
| Authorization                                | c UL us - Listed (OL)   |
| KC mark                                      | KC-EMV  |
| CE symbol (see declaration of conformity)    | according to EU-EMV guideline   |
| UKCA marking (see declaration of conformity) | To UK instructions for EMC  |
| Corrosion resistance classification CRC      | 2 - Moderate corrosion stress   |
| PWIS conformity                              | VDMA24364 zone III  |

| Feature                                   | Value                            |
|---|----------------------------------|
| Medium temperature                        | 5 ... 50 °C                      |
| Protection class                          | IP65                             |
| Ambient temperature                       | 5 ... 50 °C                      |
| Storage temperature                       | -10 ... 60 °C                    |
| Product weight                            | 1,100 g                          |
| Linearity error in ± %FS                  | 1 %FS                            |
| Overall accuracy                          | 1,25 %FS                         |
| Temperature coefficient                   | 0.04 %/K                         |
| Repetition accuracy in ± %FS              | 1 %FS                            |
| Diagnosis interface electrical connection | Socket, M12, 5-pin, A-coded      |
| Electrical connection IN                  | Plug, M12, 5-pin, A-coded        |
| Electrical connection OUT                 | Plug, M12, 5-pin, A-coded        |
| Mounting type                             | with through hole                |
| Pneumatic connection, port 1              | G1/4                             |
| Pneumatic connection, port 2              | G1/4                             |
| Pneumatic connection, port 3              | G1/4                             |
| Materials note                            | Conforms to RoHS                 |
| Material housing                          | Anodised wrought aluminium alloy |