

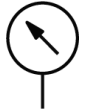
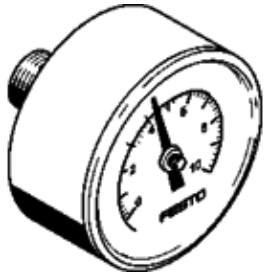
Pressure gauge MA-63-10-1/4-EN

Part number: 162840
Product to be discontinued

FESTO

With display unit in bar and psi.

Type to be discontinued. Available until 2014. See Support Portal for alternative products.



Data sheet

| Feature | Value |
|---|-------------------------------|
| Indicating range [bar] | 0 ... 10 bar |
| Conforms to standard | EN 837-1 |
| Nominal size of pressure gauge | 63 |
| Design structure | Bourdon-tube pressure gauge |
| Mounting type | Line installation |
| Operating medium | Inert gases Neutral fluids |
| Working pressure | 0 ... 10 bar |
| Alternating load factor | 0.66 |
| Measurement accuracy class | 2,5 |
| Protection class | IP43 |
| Medium temperature | -20 ... 60 °C |
| Ambient temperature | -20 ... 60 °C |
| Materials note | Conforms to RoHS |
| Position of connection | Rear side central |
| Pneumatic connection | G1/4 |
| Materials in contact with media | Brass |
| Materials information for screw-in stud | Brass |
| Materials information, housing | ABS |
| Materials info, viewing window | PS |
| Housing color | Black |
| Product weight | 80 g |
| Note on operating and pilot medium | No oxygen No acetylene |