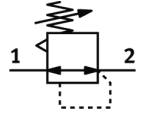
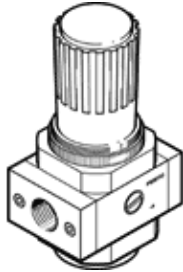


# Pressure regulator LR-1/2-D-7-O-MIDI

Part number: 162602  
Classic - do not use for new projects

FESTO

With threaded connection plate, without pressure gauge  
Modern alternatives can be found by entering the first four characters of the type code in the search field.



## Data sheet

Feature	Value
Size	Midi
Series	D
Actuator lock	Rotary knob with lock
Assembly position	Any
Design structure	directly-controlled diaphragm regulator
Controller function	Output pressure constant with initial pressure compensation with secondary exhaust
Pressure gauge	Prepared for G1/4
Working pressure	0 ... 16 bar
Pressure regulation range	0.5 ... 7 bar
Max. pressure hysteresis	0.2 bar
Standard nominal flow rate	4,000 l/min
Operating medium	Compressed air in accordance with ISO8573-1:2010 [7:4:4] Inert gases
Note on operating and pilot medium	Lubricated operation possible (subsequently required for further operation)
Corrosion resistance classification CRC	2 - Moderate corrosion stress
PWIS conformity	VDMA24364-B1/B2-L
Air purity class at output	Compressed air in accordance with ISO8573-1:2010 [7:4:4] Inert gases
Medium temperature	-10 ... 60 °C
Ambient temperature	-10 ... 60 °C
Product weight	660 g
Mounting type	Front panel installation Line installation with accessories
Pneumatic connection, port 1	G1/2
Pneumatic connection, port 2	G1/2
Materials note	Conforms to RoHS
Material of connecting plate	Zinc die-casting
Material seals	NBR
Material housing	Zinc die-casting