

Solenoid valve

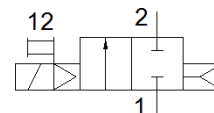
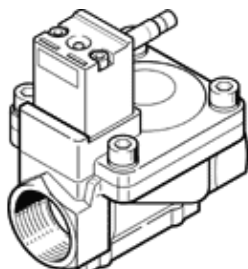
MN1H-2-1 1/2-MS

Part number: 161734
Classic - do not use for new projects

FESTO

With manual override, without solenoid coil or socket. Solenoid coil and socket should be ordered separately.

Modern alternatives can be found by entering the first four characters of the type code in the search field.



Data sheet

Feature	Value
Design structure	Diaphragm valve
Type of actuation	electrical
Sealing principle	soft
Assembly position	Any
Mounting type	Line installation
Process valve connection	G1 1/2
Electrical connection	Plug pattern type A to EN 175301-803 Plug Per DIN EN 175301-803 Cubic design
Nominal size	40 mm
Valve function	2/2 closed, monostable
Manual override	with accessories, detenting Pushing
Flow direction	non reversible
Medium	Filtered compressed air, degree of filtration 200 µm
Exhaust-air function	not throttleable
Characteristic coil data	110 V AC: 50 Hz, pick-up power 5 VA, holding power 3.7 VA 110 V AC: 60 Hz, pick-up power 5 VA, holding power 3.7 VA 230 V AC: 50 Hz, pick-up power 5 VA, holding power 3.7 VA 230 V AC: 60 Hz, pick-up power 5 VA, holding power 3.7 VA 24 V DC: 2.5 W
Type of reset	Air spring
Type of piloting	Piloted
Medium pressure	0.5 ... 10 bar
Note on operating and pilot medium	Lubricated operation possible (subsequently required for further operation)
Medium temperature	-10 ... 60 °C
Ambient temperature	-10 ... 60 °C
Standard nominal flow rate	30,500 l/min
Switching time on	230 ... 440 ms
Switching time off	300 ... 1,000 ms
PWIS conformity	VDMA24364-B1/B2-L
Material housing	Brass
Material screws	High alloy steel, non-corrosive
Material number, screw	1.4301
Product weight	2,600 g
Protection class	IP65 with plug socket