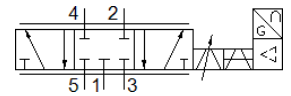
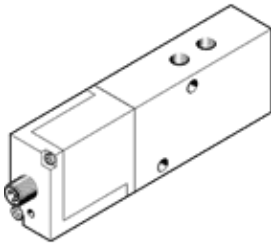


Proportional directional control valve MPYE-5-M5-010-B

Part number: 154200

FESTO



Data sheet

Feature	Value
Nominal size	2 mm
Type of actuation	electrical
Sealing principle	Hard
Assembly position	Any
Design structure	Piston slide
Type of reset	Magnetic spring
Safety instructions	MPYE safety position: If the power supply cable is interrupted, travel occurs to the closed mid-position
Type of piloting	direct
Flow direction	non reversible
Valve function	5/3 closed
Polarity protected	for all electrical connections
Operating pressure MPa	0 ... 1 MPa
Working pressure	0 ... 10 bar
b value	0.21
C value	0.45 l/sbar
Standard nominal flow rate	100 l/min
Limit frequency	115 Hz
Max. hysteresis	0.4 %
Operating voltage range DC	17 ... 30 V
Residual ripple	5 %
SETPOINT/ACTUAL values	Voltage type 0 - 10 V
Authorization	RCM Mark
KC mark	KC-EMV
CE symbol (see declaration of conformity)	according to EU-EMV guideline in accordance with EU RoHS directive
UKCA marking (see declaration of conformity)	To UK instructions for EMC To UK RoHS instructions
Operating medium	Compressed air in accordance with ISO8573-1:2010 [6:4:4]
Note on operating and pilot medium	Lubricated operation not possible
Corrosion resistance classification CRC	2 - Moderate corrosion stress
PWIS conformity	VDMA24364-B2-L
Medium temperature	5 ... 40 °C
Protection class	IP65
Ambient temperature	0 ... 50 °C
Product weight	255 g
Electrical connection	4-pin M12x1 Plug Round design
Mounting type	with through hole
Pneumatic connection, port 1	M5
Pneumatic connection, port 2	M5
Pneumatic connection, port 3	M5
Pneumatic connection, port 4	M5
Pneumatic connection, port 5	M5

Feature	Value
Materials note	Conforms to RoHS
Material cover	ABS coated
Material seals	NBR
Material housing	Aluminum Anodized