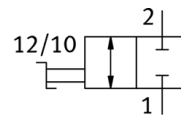
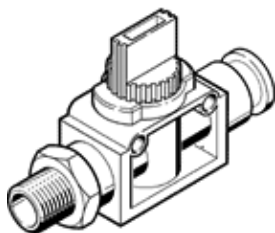


Shut-off valve HE-2-1/4-QS-1/4-U

Part number: 153990

FESTO



Data sheet

Feature	Value
Valve function	2/2 bistable
Pneumatic connection, port 1	1/4 NPT
Pneumatic connection, port 2	QS-1/4
Type of actuation	manual
Mounting type	Direct mounting via through-holes Direct mounting via threads Optional
Standard nominal flow rate	340.2 l/min
Nominal size	3.2 mm
Operating pressure MPa	-0.095 ... 1 MPa
Working pressure	-0.95 ... 10 bar
Ambient temperature	0 ... 60 °C
Material housing	PBT-reinforced
Operating medium	Compressed air in accordance with ISO8573-1:2010 [7:-:-]
Sealing principle	soft
Assembly position	Any
Design structure	Piston slide
Type of piloting	direct
Flow direction	reversible
Note on operating and pilot medium	Lubricated operation possible (subsequently required for further operation)
Corrosion resistance classification CRC	2 - Moderate corrosion stress
PWIS conformity	VDMA24364-B1/B2-L
Cleanroom class	ISO class 4
Medium temperature	0 ... 60 °C
Product weight	35 g
Material of threaded plug	Nickel-plated brass
Materials note	Conforms to RoHS
Material seals	NBR