

One-way flow control valve

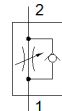
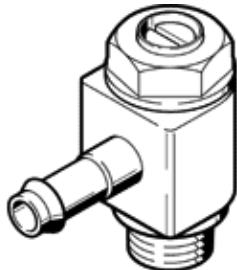
GRLZ-M5-PK-4-B

Part number: 151185
Product to be discontinued

FESTO

For supply air flow control, with swivel joint.

Type to be discontinued. Available until 2024. See Support Portal for alternative products.



Data sheet

Feature	Value
Valve function	one-way flow control function for supply air
Pneumatic connection, port 1	PK-4
Pneumatic connection, port 2	M5
Adjusting element	Slotted head screw
Mounting type	Threaded
Standard nominal flow rate in flow control direction	83 l/min
Standard nominal flow rate in non-return direction	76 ... 88 l/min
Working pressure	0.2 ... 10 bar
Ambient temperature	-10 ... 60 °C
Assembly position	Any
Standard flow rate in flow control direction 0.6->0 MPa (6->0 bar, 87->0 psi)	140 l/min
Standard flow rate in non-return direction at 0.6->0 MPa (6->0 bar, 87->0 psi)	125 ... 150 l/min
Operating medium	Compressed air in accordance with ISO8573-1:2010 [7:4:4]
Note on operating and pilot medium	Lubricated operation possible (subsequently required for further operation)
PWIS conformity	VDMA24364-B1/B2-L
Medium temperature	-10 ... 60 °C
Nominal size	2 mm
Max. tightening torque	1.5 Nm
Product weight	10 g
Material of threaded plug	Brass Nickel plated
Materials note	Conforms to RoHS
Material seals	NBR
Material adjusting screw	Brass
Material swivel fitting	Zinc die-casting